

URBAN RESILIENCE DYNAMICS ACCELERATING SUSTAINABILITY TRANSITIONS

Emma Puerari

Milan, 19th January 2018



Contents

1. Resilient Europe project
2. The ARTS project
3. Participatory City Making project
4. Conclusions
5. Questions

1. RESILIENT EUROPE

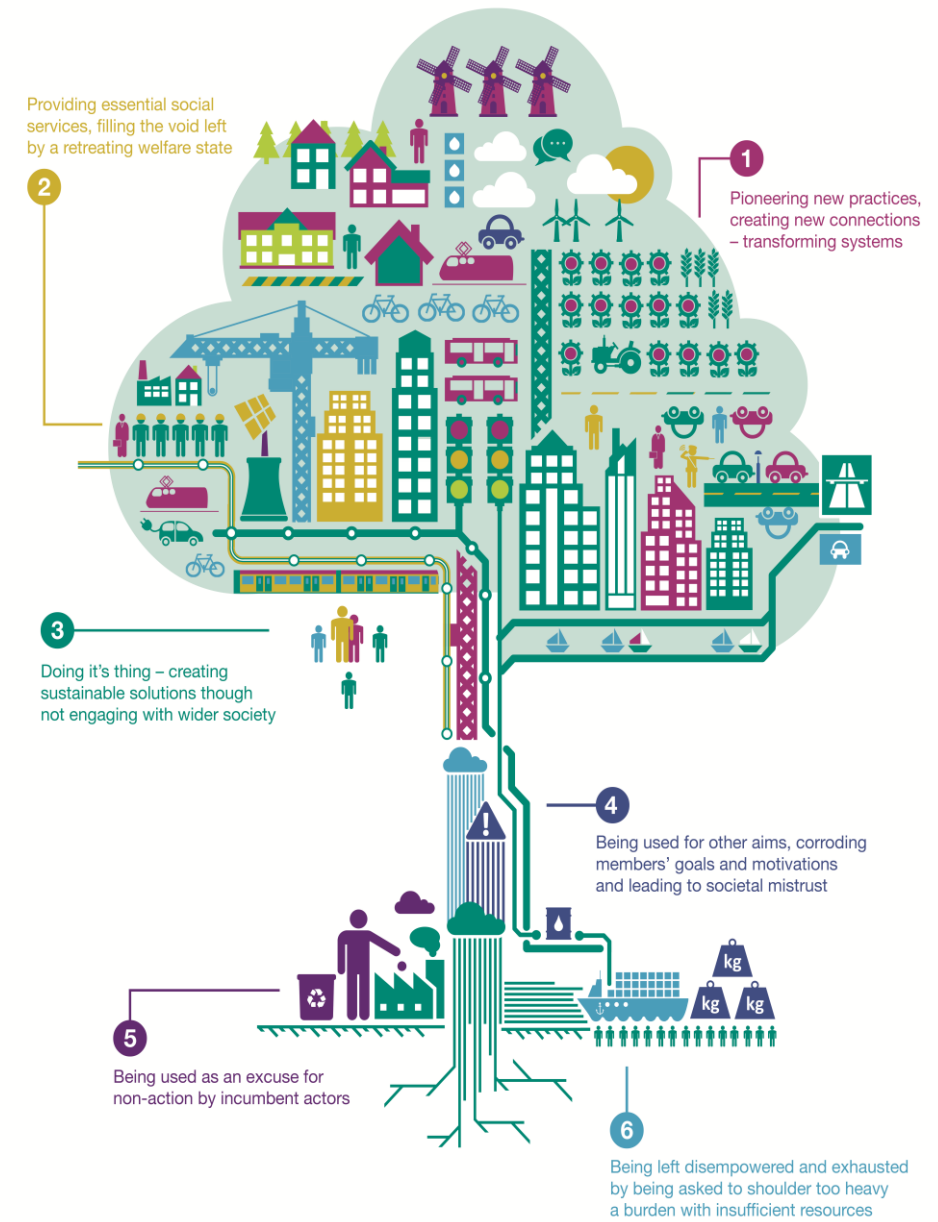
URBAN RESILIENCE

Urban resilience is the capacity of urban systems, communities, individuals, organisations and businesses to recover maintain their function and thrive in the aftermath of a shock or a stress, regardless its impact, frequency or magnitude.

The cities in the URBACT Resilient Europe network will work together to learn and share experiences with the aim to foster resilience and sustainability.

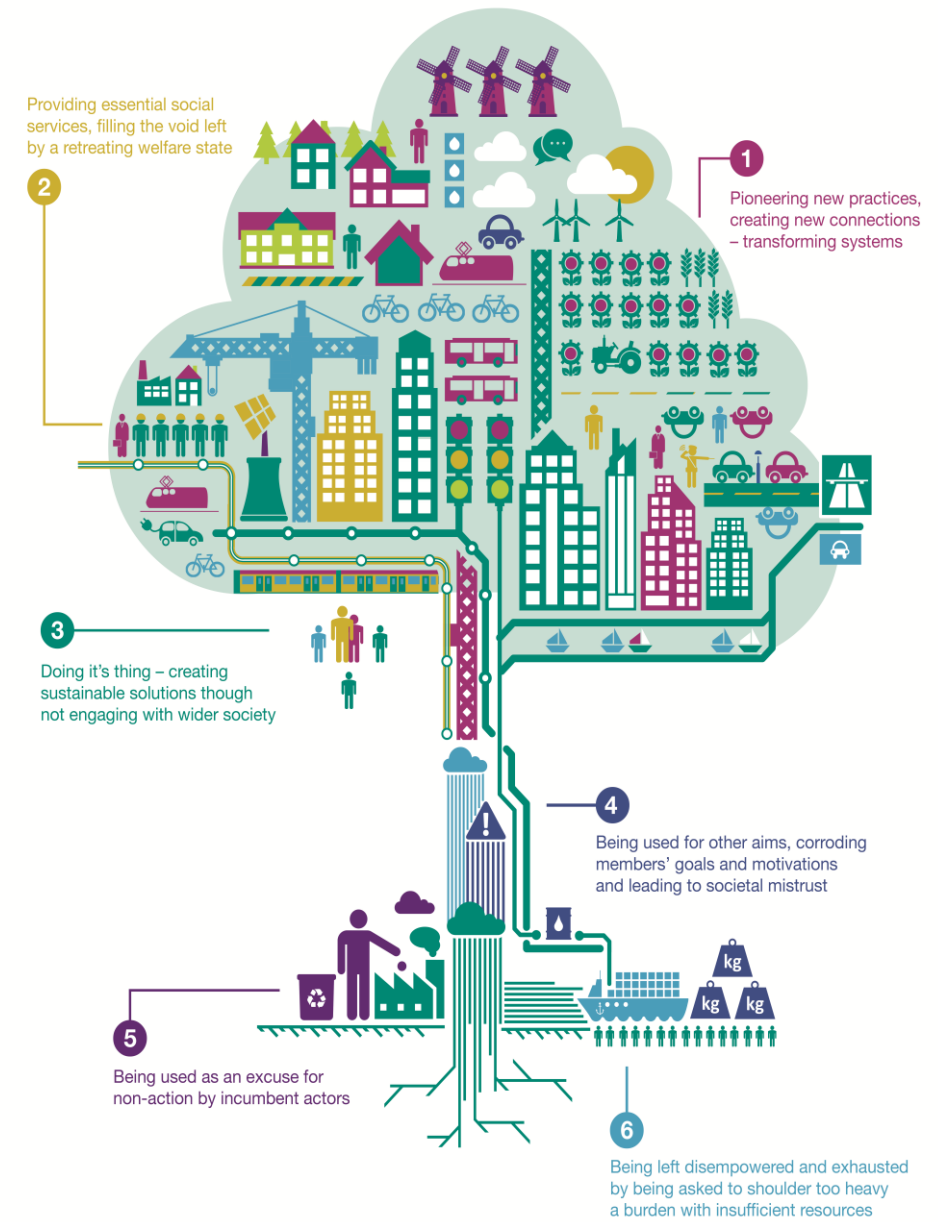
POTENTIAL ROLES OF CIVIL SOCIETY

- Pioneering new solutions and transforming systems
- Providing essential social services, filling the void left by a retreating welfare state
- Creating sustainable solutions through not engaging with the wider society



POTENTIAL ROLES OF CIVIL SOCIETY

- Being used for other means, leading to mistrust
- Being used as an excuse for non-action
- Being left disempowered and exhausted by delivering services with insufficient resources

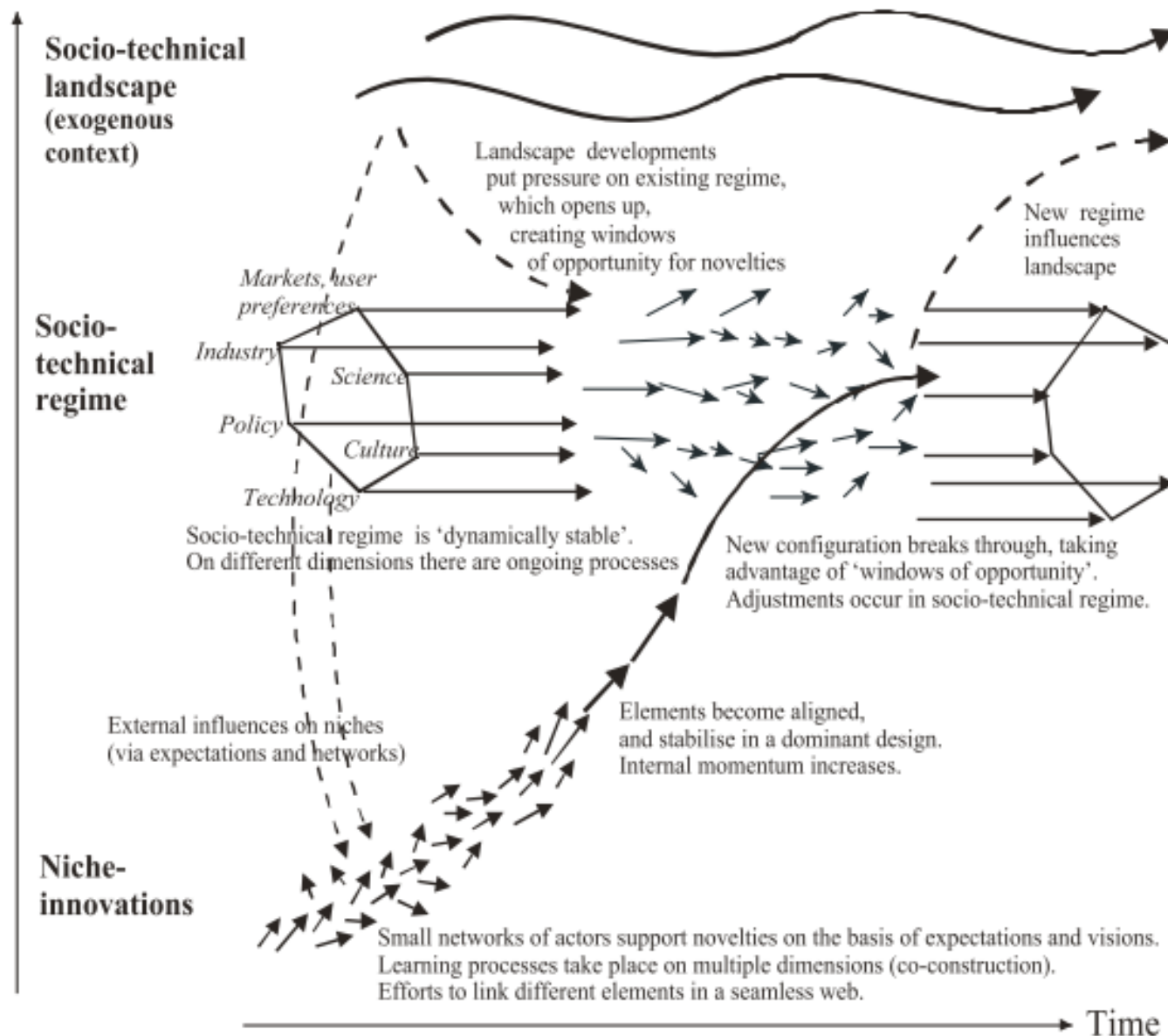


2. ARTS -ACCELERATING TRANSITIONS

ARTS

- What are **the main mechanisms** contributing to the acceleration of sustainability transitions in city-regions?
- Which **strategies** can local transition **initiatives** adopt to facilitate these mechanisms?
- How do local transition initiatives **actively attempt** to increase the inclusivity of the sustainability transitions in the city-region?

Increasing structuration
of activities in local practices



WHAT IS THE TRANSFORMATIVE POWER OF...



ACCELERATING TRANSITIONS

embedding

input and anchor new ways of doing, organising and thinking

instrumentalising

seize opportunities to strengthen local activities

partnering

partner to seek and seize synergies

upscaling

growth of members, users and supporters

replicating

more of the same (repeating, emulating, branching)

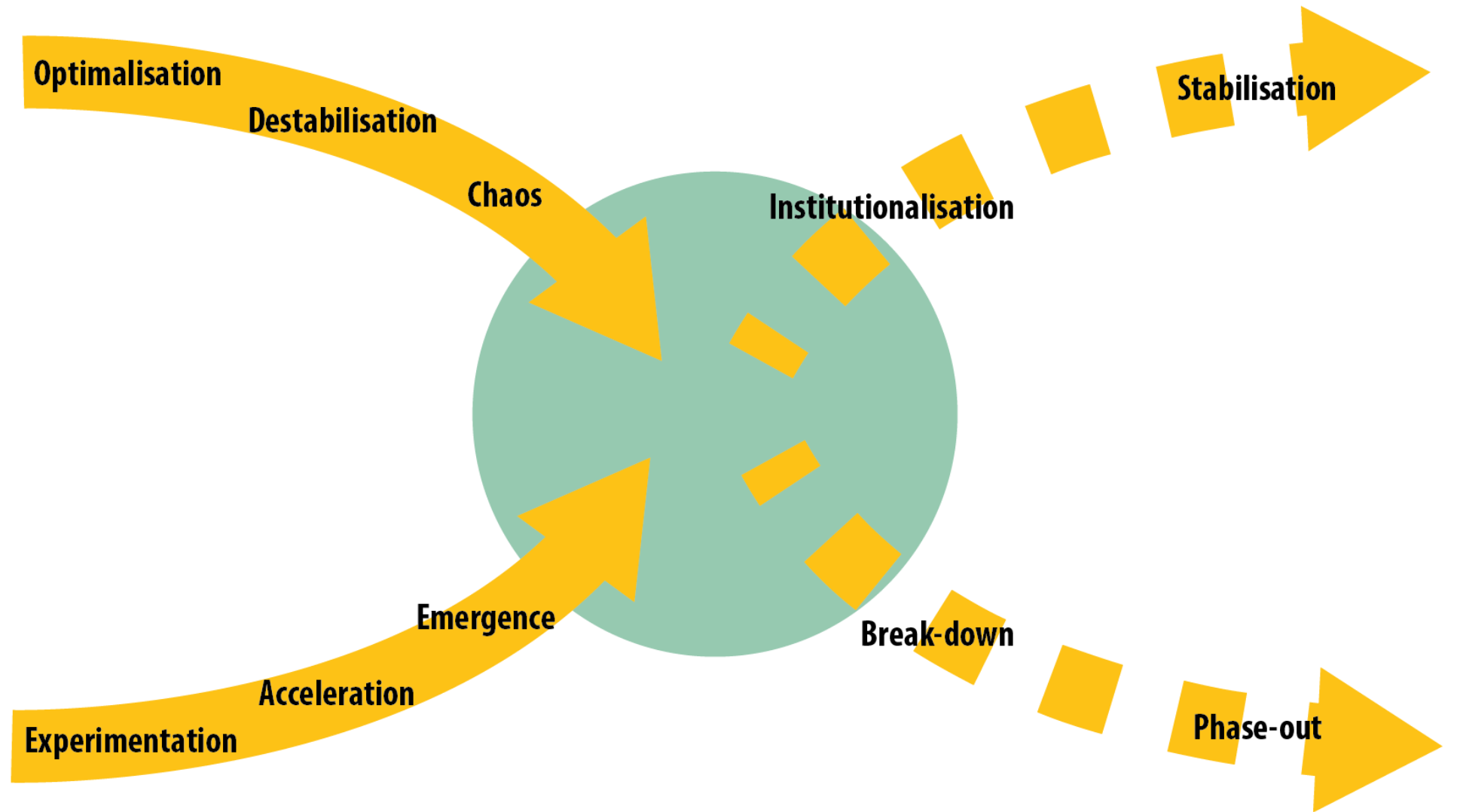
ARTS – KEY MESSAGES

- Provide **institutional spaces** for connecting and creating partnerships between different urban change agents.
- Establish and foster a **new cultures** towards collaboration and adaptive learning for urban sustainability transitions.
- The access to and use of public urban areas and vacant spaces – land and buildings – as **experimental sites** are a critical resource for urban sustainability transition initiatives.

ARTS – KEY MESSAGES

- Institutional contexts should provide **opportunities** for transition initiatives to experiment and scale, grow, spread.
- Cultivate **urban context frameworks** that embraces social diversity and plurality to effectively tap into the diverse capacities and passions of local people.
- **Explore and support** new ways of multiple, reciprocal and collective value creation since shifting to a low carbon society will also require changing the logic of what we value and how.

X-CURVE



Loorbach, Frantzeskaky, Avelino, 2016

3. PARTICIPATORY CITY MAKING



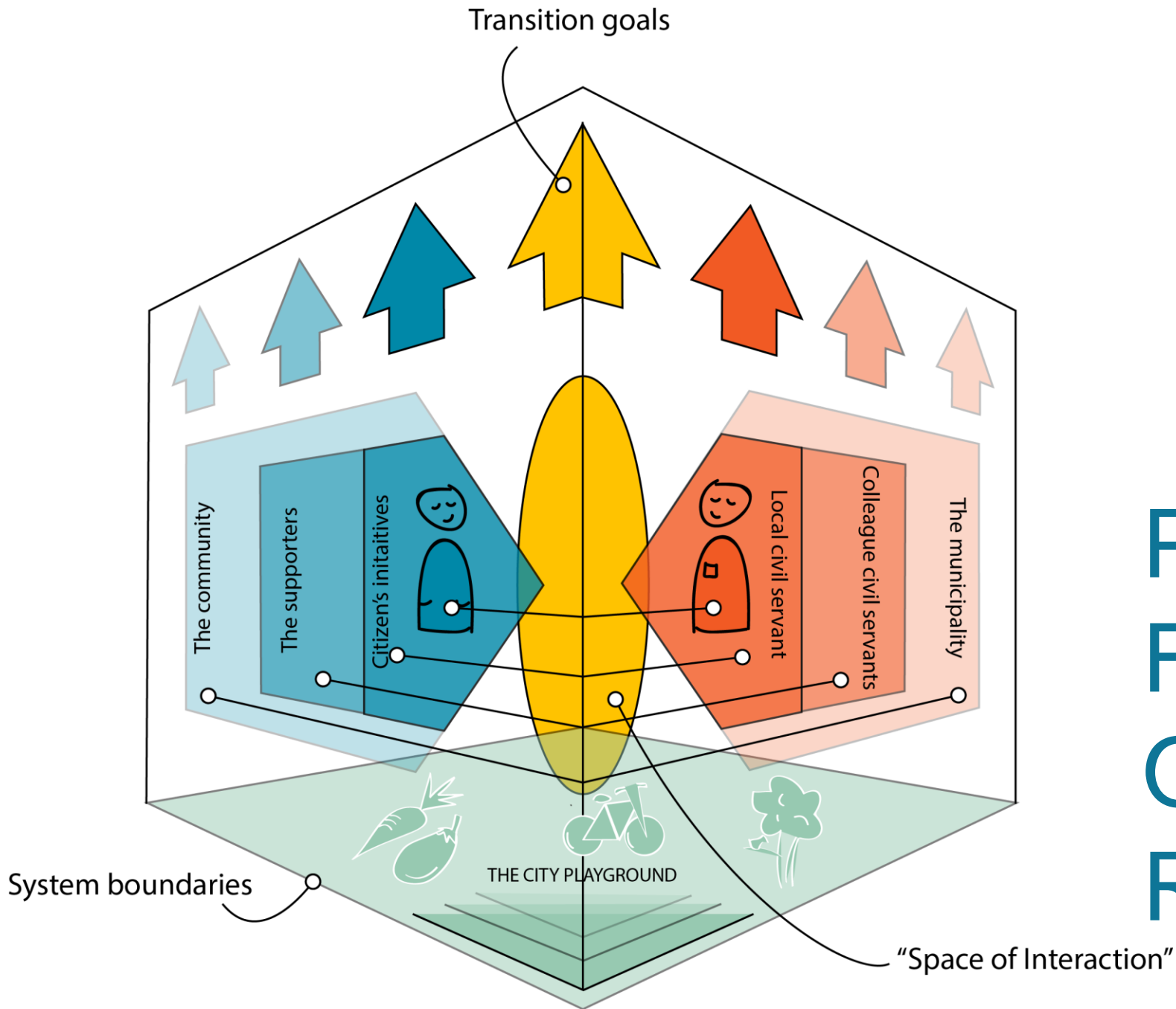
*participatory
city making*

NWO | Applied and
Engineering Sciences

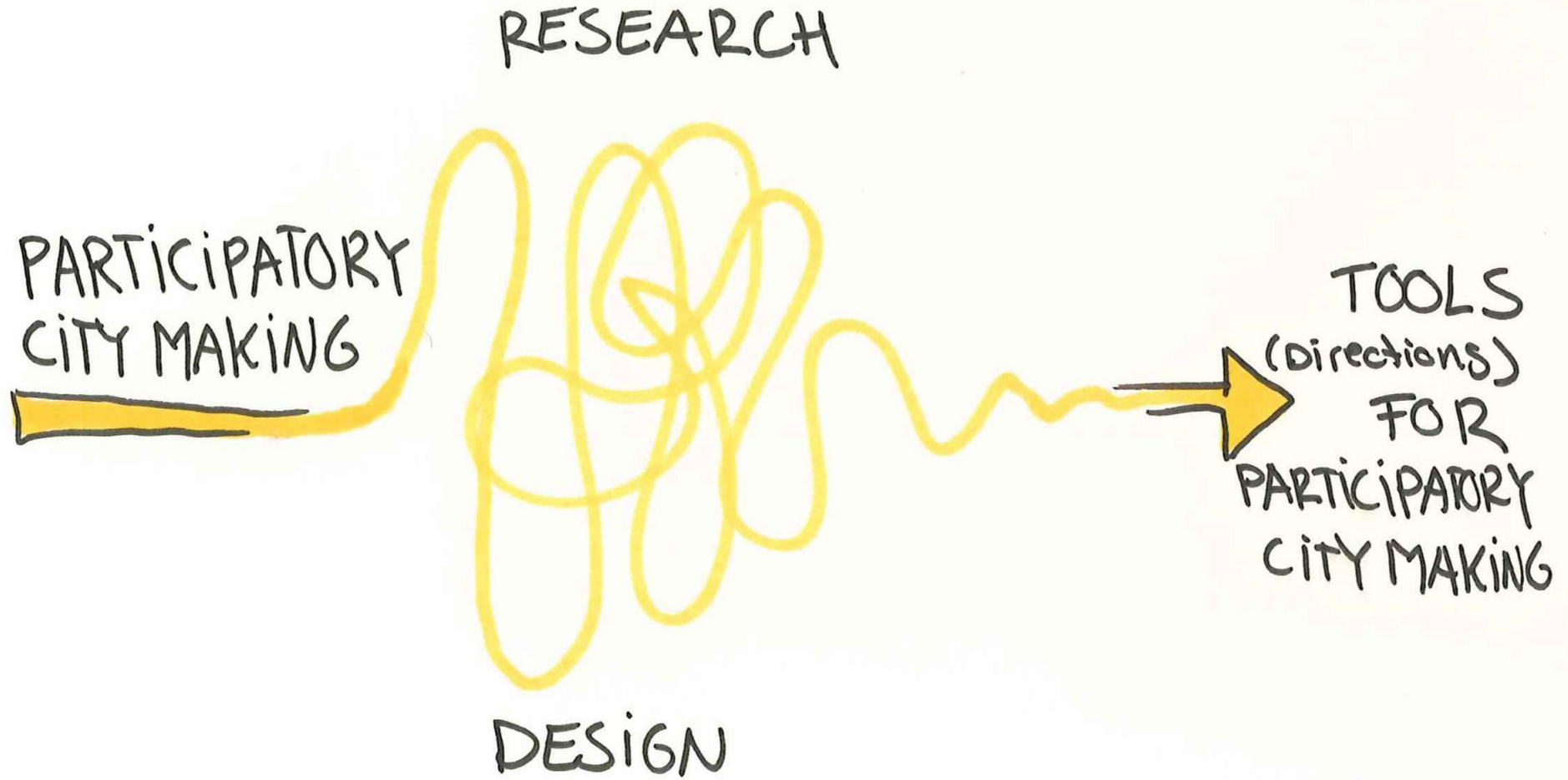


connecting innovators





PCM IS
FOCUSING
ON
ROTTERDAM



RESEARCH THROUGH DESIGN

ABSTRACTION



PRACTICE



PEOPLE USER / DESIGNER

> RESEARCHERS
> DESIGN RESEARCHERS

> DESIGN RESEARCHERS
> HC DESIGNERS

> HC DESIGNER
> DESIGN MAKERS

> DESIGN MAKERS
> SELECTED LAY DESIGNERS

> SELECTED LAY DESIGNERS
> CITIZEN DESIGNER

DESIGN TOOLS / ACTIVITIES

INTERVIEWS
MAPPING
WORKSHOPS

USER GROUPS MEETINGS
CO-CREATIVE WORKSHOPS
BUILDING REFERENCE LISTS

USER GROUPS MEETINGS
CO-CREATIVE WORKSHOPS
BUILDING REFERENCE LISTS

CO-CREATIVE WORKSHOPS
TEST GROUPS
MAKING

MAKING
USING THE TOOLKIT

TOOLS

FRAMEWORK

Thoughts

TOOL DESIGN BRIEF

Thoughts / Actions

**TOOL TEMPLATE
/ META TOOL**

Actions / Things

PCM TOOLKIT

Things

THE CITY

leading to thoughts,
actions,
things and signs

(IN BETWEEN) IMPACTS

Understanding
Seeing opportunities
Knowledge
Models
Theory

Understanding
Seeing opportunities
Empowerment
Design Thinking
Awareness

Empowerment
Design Thinking
Awareness

Niche-regime interactions
Connections

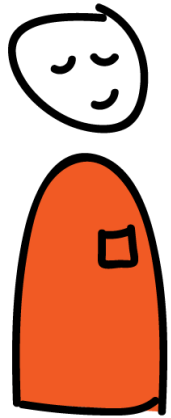
Transparency
Influence
Exchange



Long list of initiatives, 154 and more...

Name	Website	Type	Organization	Initiative starter	Since	Time	Themes	Target group
Actiegroep Oude westen	http://aktiegroepoudewesten.nl/over-ons/	Organisation	Flat	Citizens	1970	Continuous	Social cohesion / liveability	Citizens
Afval Loont, De Nederlandse Recycle Bank	http://www.afvalloont.nl	Advice initiative	?	Jørgen van Rijn		Continuous	Waste	Municipalities
AIR, Architectuur Instituut Rotterdam	http://www.airrotterdam.eu	Institute	Algemeen Nut Beogende Instelling	Manifest of Aldo Rossi	1982	Continuous	The built environment	All
Better Future Factory	http://www.betterfuturefactory.com	Company	Company	Entrepreneurs	2013	Continuous	Circular economy & Innovation	All
Bewonersplatform het Nieuwe Westen	https://www.facebook.com/bphnw/info?tab=page_info	Platform	Voluntary	Citizens	2013	Continuous	Social cohesion / liveability	Community mem
Bewust Bewoner	https://www.facebook.com/bewust.bewoner	Project	Voluntary	Graduation student	2012	Temporary	Social cohesion / liveability	Community mem
Blauwe zon	http://atelierblauwezoon.nl	Atelier	None	Maura Regyna en Marco Nijmeijer	2009	Continuous	Art	Community mem
Blijstroom	http://blijstroom.nl	Company / energycooperative	Cooperative	Citizens of Blijdorp	2014	Continuous	Energy	All
Blue city 010	http://www.bluecity.nl	Incubator space	Company	Rotterzam	2012	Continuous	Circular economy / innovation	Entrepreneurs
Buurt Bruist	http://www.buurtbruist.nl http://www.buurtbruist.nl/index.php/home/	Project	Project	Krachtgroen & gebiedsmanager Middelland & Het Nieuwe Westen	2013	Project	Green spaces and health	Citizens
Charlois aan het water	http://charloisaanhetwater.nl	Organisation	Foundation	Private sector	2012?	Continuous	Connecting harbor and neighbourhood	All
Citylab 010	https://www.citylab010.nl	Advice initiative	organisation	Government (gemeente)	??	Continuous	City Making	Citizens
CODUM	https://www.facebook.com/CodumNL/	Organisation / Platform	paid	Private sector	2008	Continuous	The built environment	Private sector
Cyclehack rotterdam	http://www.cyclehack.com/cyclehack-2016/						Transport	

FROM

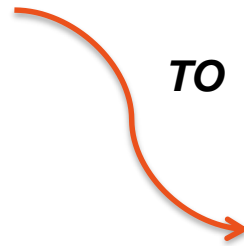


GOVERNMENT

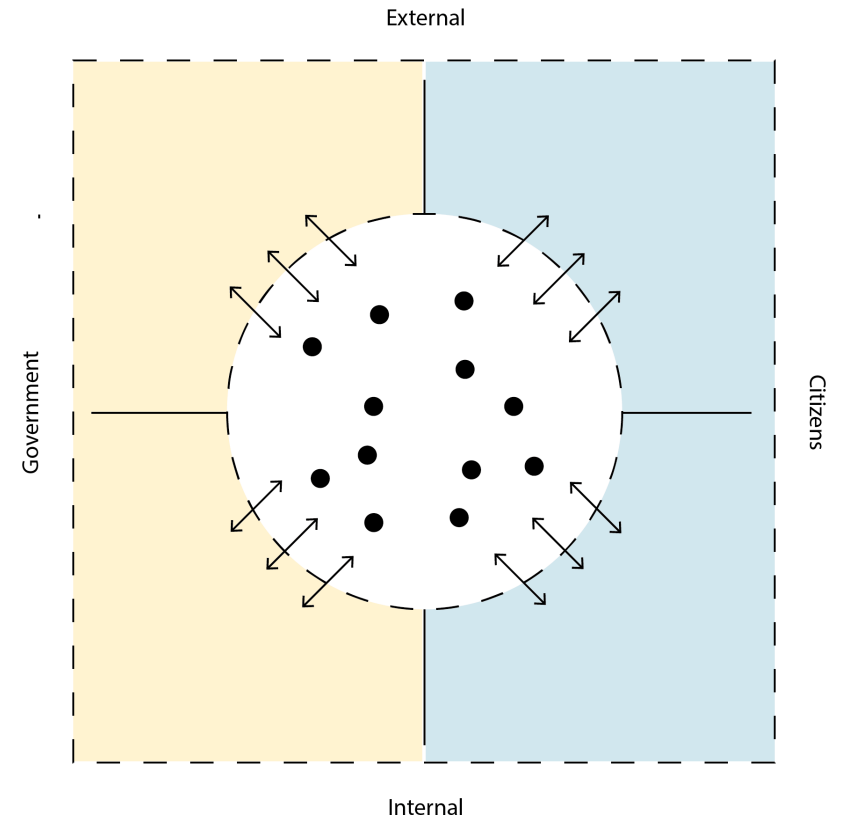
WS



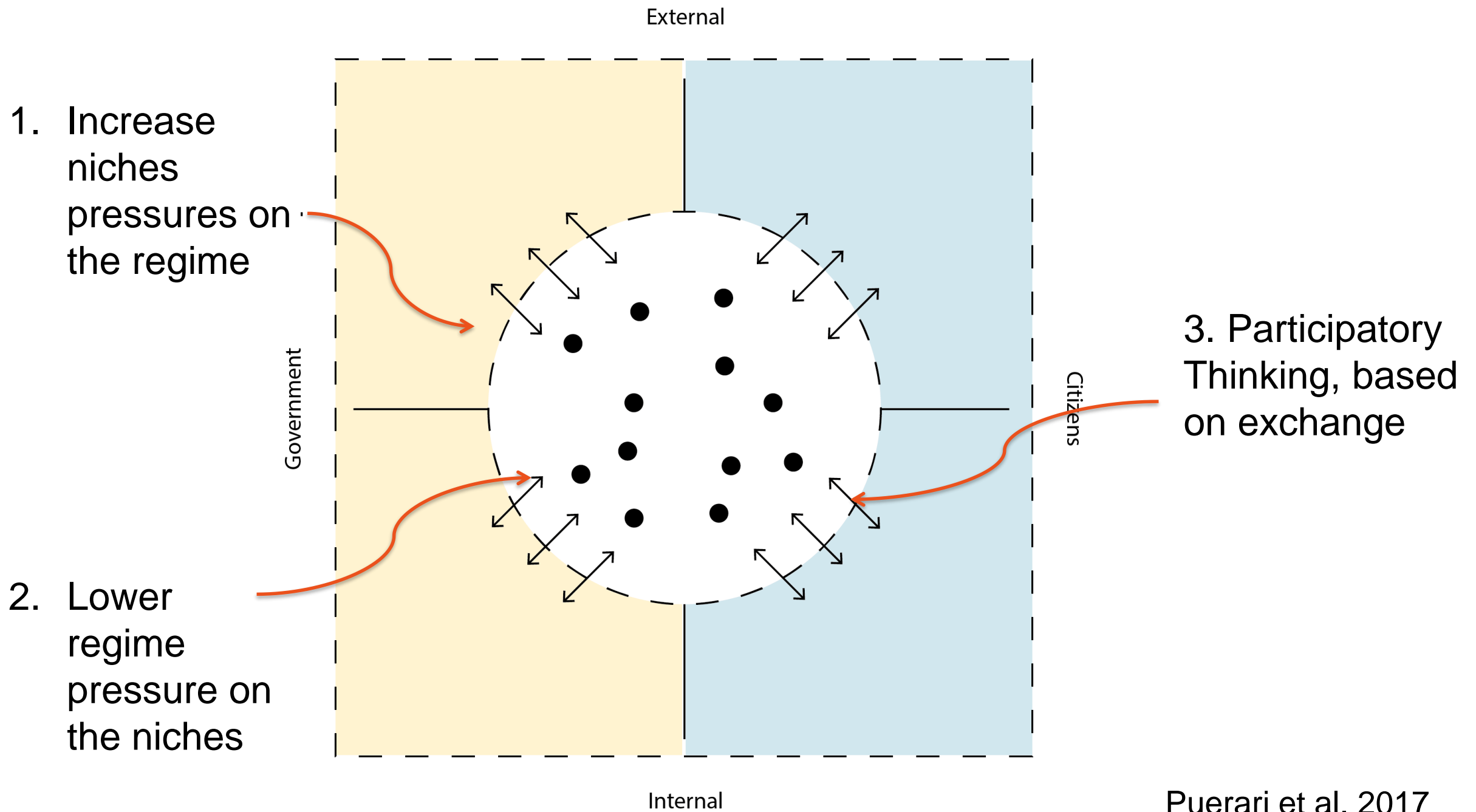
CITIZENS



TO



Recognizing and Approaching



Transition design Challenges

Gaziulusoy & Ryan, 2017

Political



Creative



Technical

Transition design Activities

Gaziulusoy & Ryan, 2017



Tactical



Operational



Strategic

Tool Matrix

TOOL DIMENSIONS		1	2	3	4	5	6	7	8	9
Form	Appearance	<i>Digital</i>	<i>Physical</i>	<i>Hybrid</i>						
	Setting	<i>Public</i>	<i>Private</i>	<i>Hybrid</i>						
Context	Scale	<i>Street</i>	<i>Neighborhood</i>	<i>"Gebied"</i>	<i>City</i>	<i>National</i>				
Users	User types	<i>Initiatives</i>	<i>Citizens</i>	<i>Government</i>	<i>Initiatives & Citizens</i>	<i>Initiatives & Government</i>	<i>Citizens & Government</i>	<i>Citizens, Initiatives & Government</i>		
	User roles	<i>Connector</i>	<i>Organizer</i>							
	User access	<i>Public, everyone</i>	<i>Approval</i>	<i>Selected users</i>						
	User profile	<i>Leader</i>	<i>Devoted follower</i>	<i>The supporter</i>	<i>The 'Mass'</i>					
Use	User input	<i>Knowledge</i>	<i>Data</i>	<i>Skills</i>	<i>People / network</i>	<i>Resources</i>	<i>Visions, ideas</i>			
	User output	<i>Knowledge</i>	<i>Data</i>	<i>Skills</i>	<i>People / network</i>	<i>Resources</i>	<i>Visions, ideas</i>			
	User interaction with the tool	<i>Connecting</i>	<i>Receiving</i>	<i>Providing</i>	<i>Receiving & providing both ways</i>					
Goal	Aimed at	<i>Thematic: mobility</i>	<i>Thematic: Green space</i>	<i>Thematic: Food</i>	<i>Activity: connecting</i>	<i>Activity: learning</i>				
	Problem it solves, lack of:	<i>Planning capacity</i>	<i>Ideas</i>	<i>Tools</i>	<i>People</i>	<i>Time</i>	<i>Skills</i>	<i>knowledge</i>	<i>Data</i>	<i>Resources</i>
	Participation level / ladder	<i>Manipulation</i>	<i>Therapy</i>	<i>Informing</i>	<i>Consultation</i>	<i>Participation</i>	<i>Partnership</i>	<i>Delegated power</i>	<i>Citizen control</i>	
Influence	Organisational level	<i>Technical level</i>	<i>Creative level</i>	<i>Political level</i>	<i>T & C level</i>	<i>P & C level</i>	<i>T & P level</i>	<i>All three</i>		
	Design level	<i>Products</i>	<i>Services</i>	<i>Experiences</i>	<i>Transformation</i>					
	Practices	<i>Images</i>	<i>Skills</i>	<i>Stuff</i>						
	Social innovation stage	<i>Prompts</i>	<i>Proposals</i>	<i>Prototypes</i>	<i>Sustaining</i>	<i>Scaling</i>	<i>Systemic change</i>			

THE INTEGRALITY DEMONSTRATOR

A tool that shows the work you do in different fields

WHAT IS IT?

The 'integrality demonstrator tool' will enable you to show the work you do in different fields. It will help you to demonstrate to others that your project tackles more than just one issue and that it has value for different themes.

WHY DO YOU NEED IT?

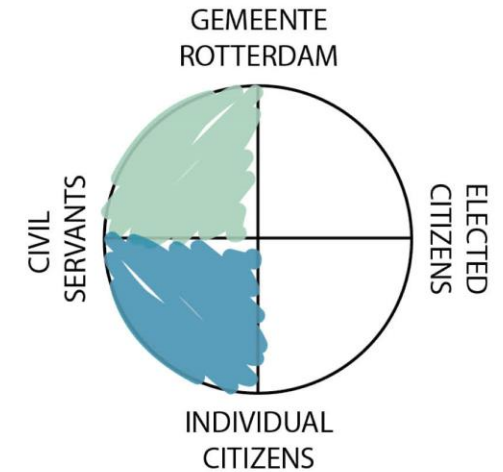
This will help you in making clear that there is more you do than just tackling one issue, or one theme. It will be helpful in showing the value of your work to others, get partners on board, build your network in different fields but also possibly make you eligible for resources from different fields.

WHAT WILL IT CHANGE?

Hopefully, the tool will enable people to show the value of their projects that have an holistic approach. It might even encourage people to take a more integral and holistic approach to their upcoming projects. And, maybe even make funding for holistic projects easier.

WHAT COULD IT DEVELOP TOWARDS?

The initial tool does not necessarily involve numbers and facts on the impact of projects, since this often requires heavy data collection and monitoring. But it might in the future evolve into a tool that enables showing the numbers on the impact of one particular thematic project on the working fields of other themes.



QUOTES FROM THE FIELD

"When there are benefits from one project in cluster A that also benefits problems in cluster B, how do you show that you did that for cluster B?"

"How can we make all benefits clear of a project, how do we 'apply or lobby' for money then?"

THE NETWORK OPERATOR

A tool that helps you in setting up your own bottom-up cooperative network

WHAT IS IT?

The 'network operator' helps you to set up your own cooperative or network. Between different individuals or initiatives, or a combination of these. It will guide you through different steps in developing alignment together. It will help you with tips and tricks to get different steps sorted out and make them tangible.

WHY DO YOU NEED IT?

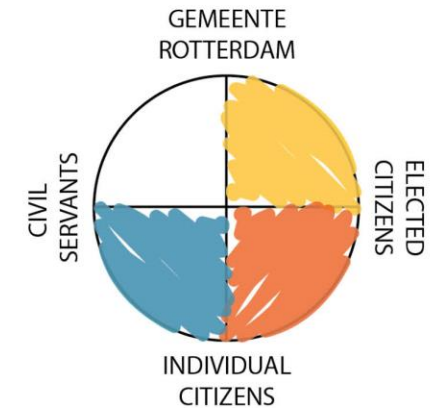
Setting-up a network between groups of different people can be challenging. There will be different opinions and expectations from the different people. Therefore, various alignments will have to be developed between the network members. This tool will help you in aligning your network members on a few essential topics, in a sequence of a few steps and make them tangible so it can be a shared outcome of all members to agree upon.

WHAT WILL IT CHANGE?

It will make setting up a network or cooperative structure more easy, this might encourage people to start one or make people not abandon the idea when things get difficult. And, successful networks might increase the impact of the individual initiatives.

WHAT COULD IT DEVELOP TOWARDS?

In the beginning it will be merely supportive for network structures or cooperatives. However, in the future it could develop towards integrating more officially binding outcomes for initiatives in their development.



QUOTES FROM THE FIELD

"There are many people but how to keep them happy and get the different expectations and ways of working aligned."

"One of the objectives is to transform how initiatives are organised and make them work collaboratively."

"Connecting initiatives is a way to show to the municipality how the things can work in a different way. It is about taking action and not only waiting for investment."

THE CIVIL SERVANT FRIEND FINDER

*Because civil servants can
be your friends*

WHAT IS IT?

The 'civil servant friend finder' helps you to find civil servants with certain skills but also with a passion that fits with what you want to achieve. It enables you to find that civil servant with an interest in gardening from a passion the same as yours.

WHY DO YOU NEED IT?

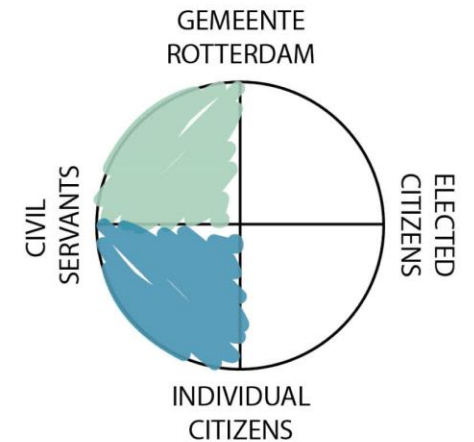
It is needed because citizens and civil servants often in the end have similar interests: making a city better. on different topics. However, it is often hard for people with an idea, passion or already running initiative to find the right civil servants for certain issues. With the 'civil servant friend finder' it will be easier to approach civil servants and to find people with similar passions.

WHAT WILL IT CHANGE?

When people are connected over a similar passion or topic, they will be more willing to help each other and go the extra mile. This will enable exchange and possibly more change because of the energy between the people. Also, it might make it easier for citizens to approach a civil servant because they already know something they have in common.

WHAT COULD IT DEVELOP TOWARDS?

The tool must make contact more personal and civil servants less of apparatus towards citizens. Humanizing the start of interactions is the first step but it could develop towards documenting interactions over longer periods of time.



QUOTES FROM THE FIELD

"She (initiative founder) had connection with the city of Rotterdam, but it took quite a long time to make connection with the right civil servants who were able to think with her about what to do."

"People know people that know us and I am a nice guy, they trust us [laughs]. It is not very organized, it is a very flexible and fluid network because people start doing other things, leave the environment, or get new jobs" (a civil servant)

JUST DO IT

Real life 3D photoshopping

WHAT IS IT?

A temporary spatial intervention. With 1:1 prototypes and stand-ins for a spatial intervention, a possible future is sketched. By monitoring, changing, and evaluating this temporary situation, decisions can be made for the structural solution.

WHY DO YOU NEED IT?

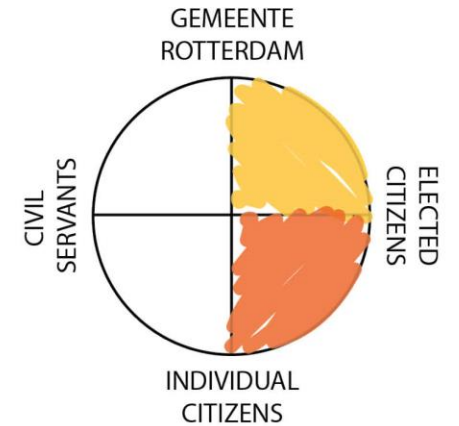
A temporary set-up of a possible future can be used by citizens and officials to give an idea a "test-run". The spatial impact as well as the impact of the co-creation process can be monitored by doing so. Before a fixed version of a spatial strategy is being implemented, all stakeholders have run through a development phase together and have been able to formulate a strategy together.

WHAT WILL IT CHANGE?

Stakeholders get to know each other and each others interests early in the process. They will be able to co-formulate their strategy. This ensures a commonly held vision for the development. The spatial impact can be assessed early in the development phase and adjustments can be made before implementing the steady version of the project.

WHAT COULD IT DEVELOP TOWARDS?

This tool could be taken into consideration at any level of vision making and spatial planning. The outcome of the monitoring of the living labs can be translated into hands-on practical tools for urban/landscape design as well as into tools for the strategic and procedural urban planning stakeholders.



QUOTES FROM THE FIELD

"By working with a wish-list, the stakeholders do not have a feeling of ownership of the projects."

"The idea was to get to 'doing' fast. The idea was that citizens were to make a move, still, a lot was pre-determined (voorgekauwd) by the local government" (initiative member).

"The balance is off between talking about the process and doing things to make things happen in the neighbourhood. (Initiative member)

*Mayor if you
Dare*

Prototyping workshop

22 November 2017

Conclusions

- It is necessary to go **beyond a dichotomy** between public and the private space of citizens, embracing the fact that niches and regime are part of both groups.
- The space of **passive** and of **active exchange** attitudes can be found on both government and citizens sides.
- It is necessary **to enable the emergence**, self-organization and co-evolution of the system.
- As transitions imply structural changes and power shifts, **this approach is also political**: it implies institutional changes that not necessarily are desired by incumbent actors or structures.
- Acceleration requires **engaging with and capitalising on existing and diverse knowledge** in the city-region.

RESILIENTEUROPE

•SAVE THE DATE•



MARCH 22ND, 2018

Resilience Matters

CO-CREATING CITIES OF THE FUTURE
•ROTTERDAM•

